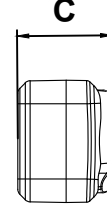
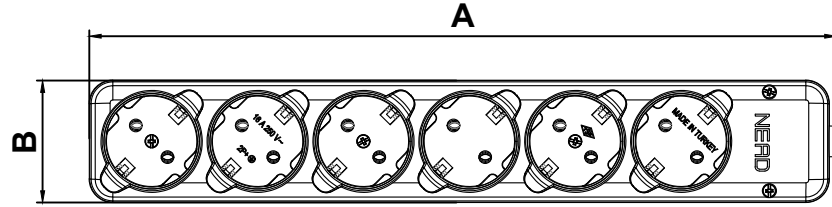
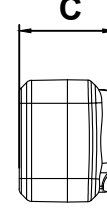
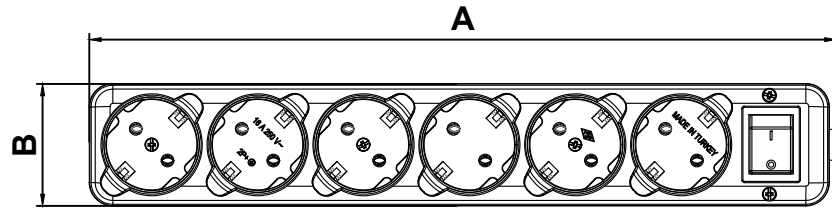




ALTI LI GRUP PRİZ GENEL ÖLÇÜLER (6 GANG EARTHED SOCKETS GROUP GENERAL DIMENSIONS)

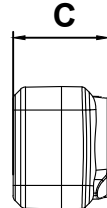
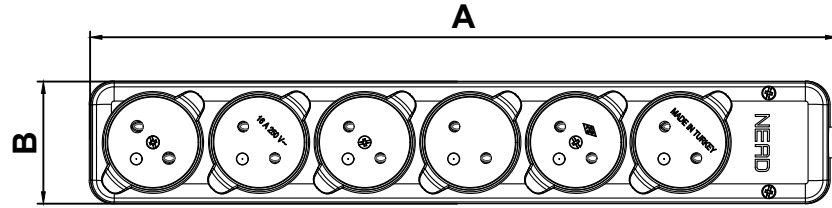


ÜRÜN KODU (PRODUCT CODE):3020-K
6'LI KLEMENSLİ TOPRAKLI GRUP PRİZ
(6 GANG EARTHED SOCKET)
ÜRÜN BİLGİSİ (PRODUCT INFORMATION) :
16A 250 V MAX:3600 W

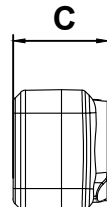
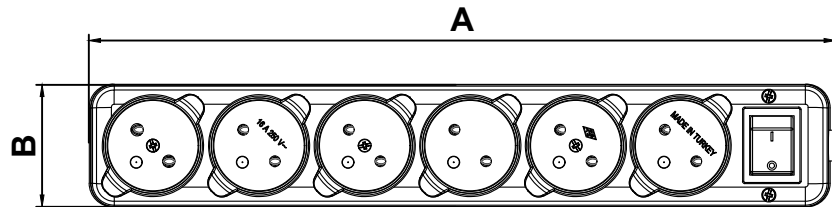


ÜRÜN KODU (PRODUCT CODE):3020-KA
6'LI KLEMENSLİ ANAHTARLI TOPRAKLI GRUP PRİZ
(6 GANG EARTHED SOCKET,WITH SWITCH)
ÜRÜN BİLGİSİ (PRODUCT INFORMATION) :
16A 250 V MAX:3600 W

SERİ ADI (SERIAL NAME):
3020-K,3020-KA,3020-K-UPS,3020-KA-UPS



ÜRÜN KODU (PRODUCT CODE):3020-K-UPS
6'LI KLEMENSLİ UPS GRUP PRİZ
(6 GANG UPS SOCKET)
ÜRÜN BİLGİSİ (PRODUCT INFORMATION) :
16A 250 V MAX:3600 W



ÜRÜN KODU (PRODUCT CODE):3020-KA-UPS
6'LI KLEMENSLİ ANAHTARLI UPS GRUP PRİZ
(6 GANG UPS SOCKET,WITH SWITCH)
ÜRÜN BİLGİSİ (PRODUCT INFORMATION) :
16A 250 V MAX:3600 W

GENEL ÖLÇÜLER (GENERAL DIMENSIONS)

ÜRÜN KODU (PRODUCT CODE)	A	B	C
3020-K	316,50	52	36
3020-KA	316,50	52	45
3020-K-UPS	316,50	52	36
3020-KA-UPS	316,50	52	45